

Móz CCI00 Round Column Covers



RFQ - Request for Quote

CONTACT INFORMATION

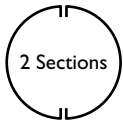
Company: _____
 Name: _____
 Address: _____
 City, State: _____ Zip: _____
 Phone: _____ Fax: _____
 Email: _____

PROJECT INFORMATION

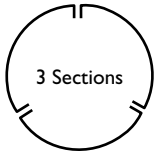
Date: _____
 Job Name: _____
 City/State: _____
 Install Date: _____
 Ship To (Zip Code): _____
 Bid Due Date: _____

DIAMETER:

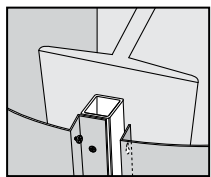
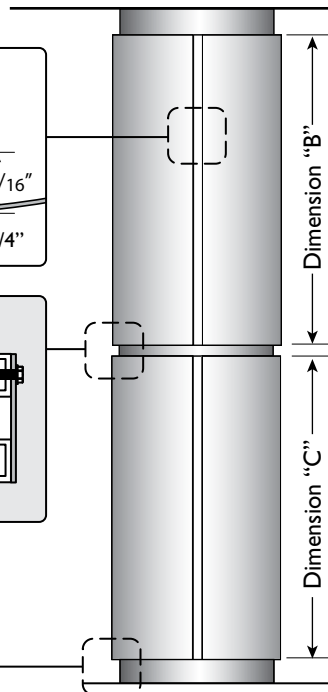
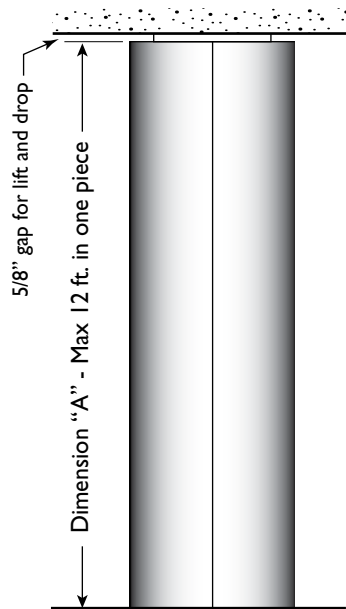
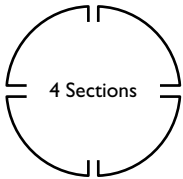
Minimum 16"
 Maximum 35"



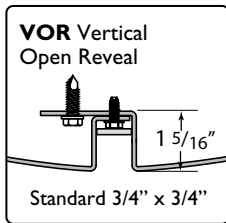
Minimum 24"
 Maximum 52"



Minimum 48"
 Maximum 70"

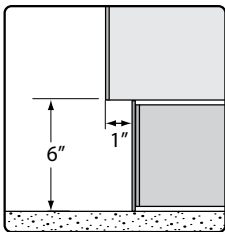


VP Typical Factory Post

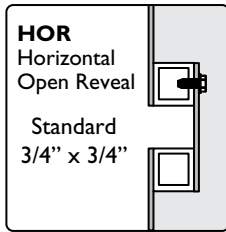


VOR Vertical Open Reveal

Standard 3/4" x 3/4"



RC Recessed Capital/
 RB Recessed Base
 6" Standard height



HOR Horizontal Open Reveal

Standard 3/4" x 3/4"

STANDARD FEATURES			
Quantity			
Diameter - min. 16" / max. 70" <small>(Allow 1 5/16" clearance behind finish column face)</small>			
Vertical Butt Joint	✓ Standard		
Number of Sections	2	3	4
Dimension "A": Finished Column Cover Height *			
Material: Aluminum (AL) or Stainless Steel (SS)	AL	SS	
Color			
Pattern			
Polycoat Finish Gloss (GL) or Matte (MT)	GL	MT	

*For columns higher than 12 ft. please contact us.

OPTIONAL ADD-ONS			
Dimension "B" Upper Cover Height			
Dimension "C" Lower Cover Height			
Recessed Capital (RC) Standard 6" height	No	Yes	
Recessed Base (RB) Standard 6" height	No	Yes	
Vertical Open Reveal (VOR) <small>(Quantity should match number of sections)</small>	No	Yes	Qty:
Horizontal Open Reveal (HOR) <small>(For more than 1 please contact us)</small>	No	Yes	Qty:
Typical Factory Vertical Posts (VP)	No	Yes	Qty:

CUSTOM OPTIONS	
Tapered Up or Down	Please contact us
Perforated (PF)	Please contact us