

Móz Wall Panel System - Keyway

Modular panels for Wall Applications



The MóZ Wall Panel System using a Keyway-type panel is an innovative approach to customized wall decor. Modular, ready-to-install kits save time and labor. Panels are made from recycled aluminum and can be decorated with the unique colors and hand-etched patterns only available from MóZ Designs.

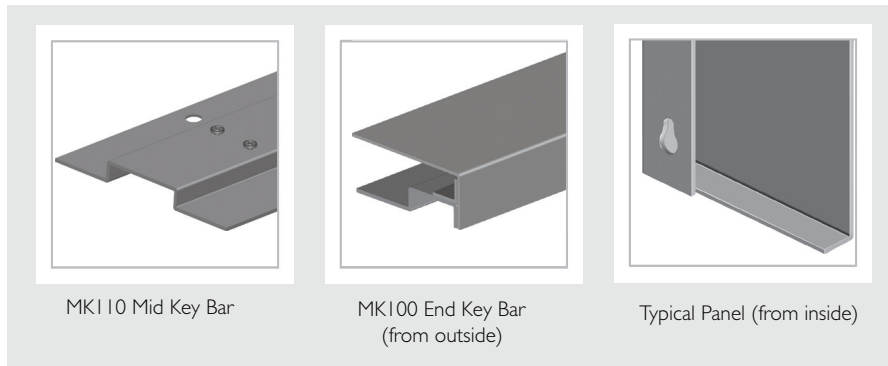
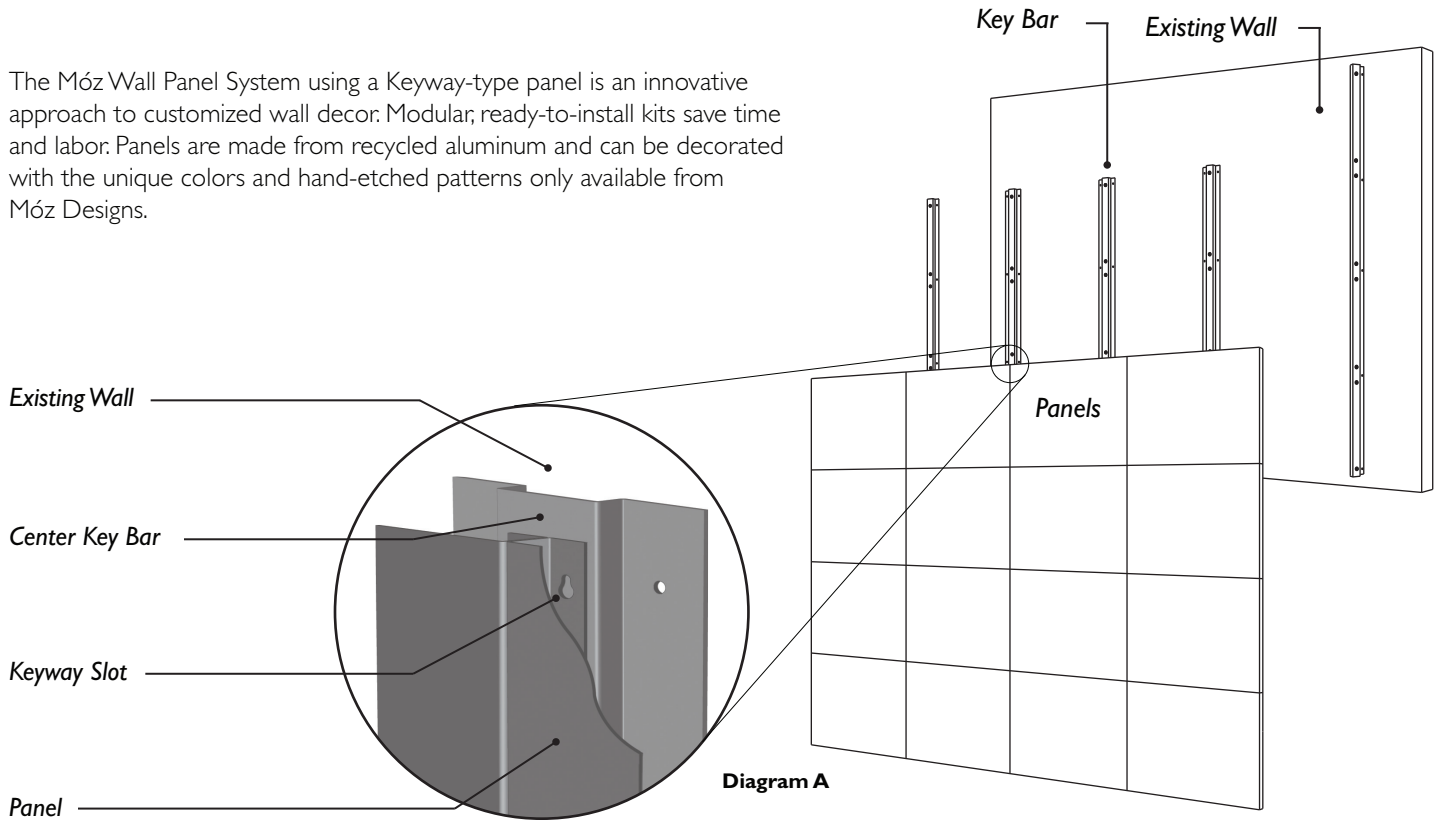


Diagram A

Exploded view of Keyway Panels in a layout using panels of the same size. Panels are hung onto Key Bars.

Two (2) End Key Bars are included for each installation. The number of Mid Key Bars vary depending on the number of panels and layout of the installation.

Standard Features

- Complete engineered system, packaged and shipped ready to install
- Decorate your panels with any of our 25 colors and 14 patterns
- Protective finishes are available, with gloss and satin options
- .063" and .090" aluminum thickness
- Horizontal or vertical installation

Custom Features

- Perforated aluminum and stainless steel base materials also available
- Custom sizes and color matching available
- Design and fabrication for exterior applications available
- Custom panel shapes

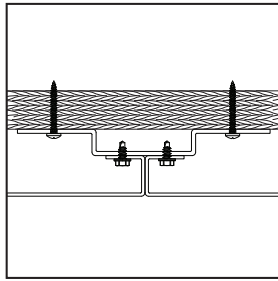
Applications

- Healthcare
- Hospitality
- Transportation
- Corporate
- Institutional
- Remodels
- Tenant Improvements
- New Construction

Standard Panel Sizes

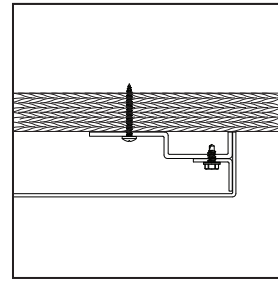
- KP2020
20" X 20"
- KP2424
24" X 24"
- KP3232
32" X 32"
- KP3636
36" X 36"
- KP2030
20" X 30"
- KP2436
24" X 36"
- KP3248
32" X 48"
- KP3648
36" X 48"

Section Views of Panels and Key Bars

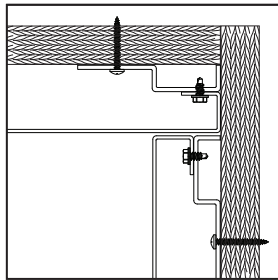


Detail showing a Mid Key Bar attached to plywood with two typical mid panels attached.

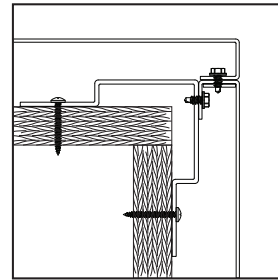
Panels stand 1-1/4" off the wall.



Detail showing an End Key Bar attached to plywood with one outer finished end panel attached.

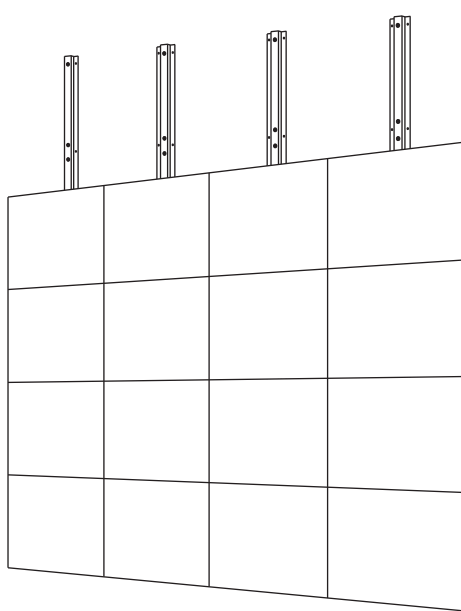


Detail showing two End Key Bars attached to plywood with two typical inner end panels attached.



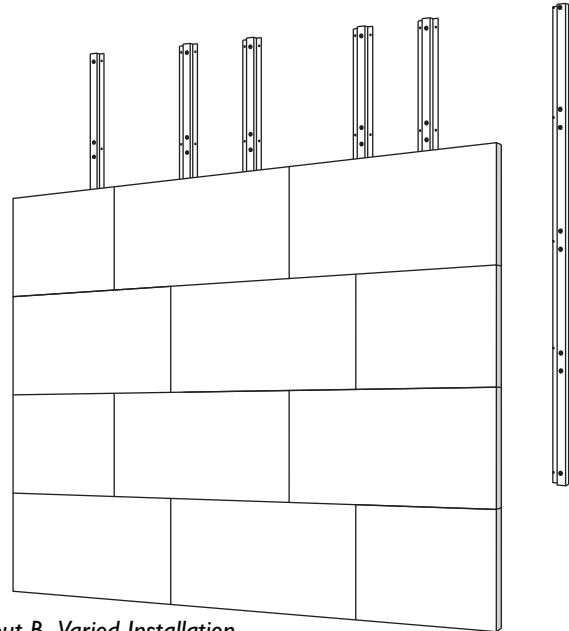
Detail showing a Corner Key Bar attached to plywood with two end corner panels attached.

Sample Layouts: You can install Keyway-type panels in a mix of sizes to suit your space and for visual interest.



Layout A. Square Installation

This example uses 16, 24" x 36" panels, with 2 End Key Bars and 3 Mid Key Bars.



Layout B. Varied Installation

This example uses 4, 24" x 24" Panels, 8, 24" x 36" panels, with 2 End Key Bars and 4 Mid Key Bars.

Decoration and Finish

All of our materials are specified with a color and a pattern. Móz Metals are available in 14 hand-etched patterns and 25 standard colors. Custom features: Blendz designs and brushed stainless #4. Please contact factory to specify a custom color.

Two types of protective finishes are available for your material including Polycoat, and Exterior grade finish.

Base Option

Depending on the installation of your product, a toekick, base or other treatment may be desired. Base treatment is only available in 18 ga. stainless steel and is a direct apply product. You may specify a pattern and color for the base to match your product.